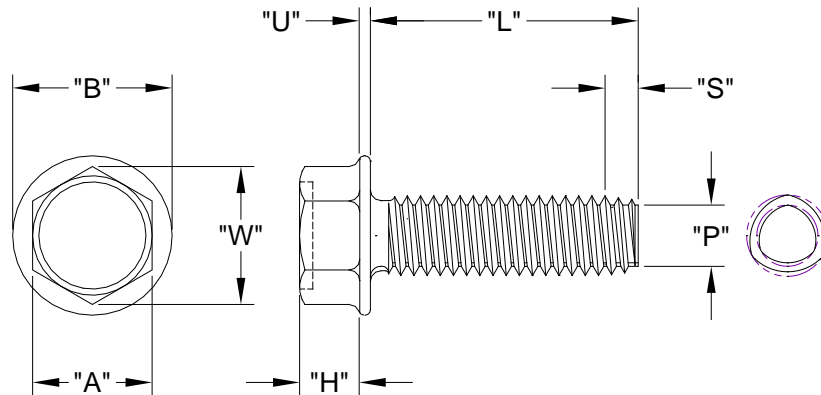


UNSLOTTED INDENTED  
HEX WASHER HEAD  
TRI-LOBE T.R.S.

44XXXXUHWT
APRIL, 2014
REV 00
PAGE 1 of 1

Nominal Screw Length	Tolerance On Screw Length
Up To & Including 3/4"	+0 / -0.03
Over 3/4" to 1-1/2" Inclusive	+0 / -0.05
Over 1-1/2"	+0 / -0.06



Nominal Screw Size	Basic Screw Size	"Cd"		"Dd"		"p"		"S"		"A"		"W"		"H"		"B"		"U"	
		Circumscribing Diameter		Major Diameter		Point Diameter		Point Taper Length		Width Across Flats		Width Across Corners		Head Height		Washer Diameter		Washer Thickness	
		Max.	Min.	Max.	Min.	Max.	Min.	Max.	Min.	Max.	Min.	Max.	Min.	Max.	Min.	Max.	Min.	Max.	Min.
#4 - 40	0.112	0.1145	0.1105	0.1095	0.1055	0.090	0.088	0.050	0.188	0.181	0.202	0.060	0.049	0.243	0.225	0.019	0.011		
#6 - 32	0.138	0.1410	0.1350	0.1350	0.1290	0.111	0.109	0.062	0.250	0.244	0.272	0.093	0.080	0.328	0.302	0.025	0.015		
#8 - 32	0.164	0.1670	0.1610	0.1610	0.1550	0.137	0.109	0.062	0.250	0.244	0.272	0.110	0.096	0.348	0.322	0.031	0.019		
1/4 - 20	0.250	0.2550	0.2490	0.2460	0.2400	0.206	0.175	0.100	0.375	0.367	0.409	0.190	0.172	0.520	0.480	0.050	0.030		

Head Standard: ASME B18.6.3  
Material: 410 Stainless Steel  
Hardness: Rc36-43  
Finish: Passivate & Wax

Common Uses:  
Increased bearing surface without adding a washer. Used in metals >60% of screw size, extruded metals, zinc die castings. NOT TO BE USED AGAINST ALUMINUM.